

# Developmental Disabilities Administration (DDA) Community Residential for the BIPOC Community

*"I have had neighbors that didn't understand disabilities. In my culture, disability is not talked about. The lack of sensitivity and inability to understand my problem raising my child was difficult for me."*

~ A Somali parent

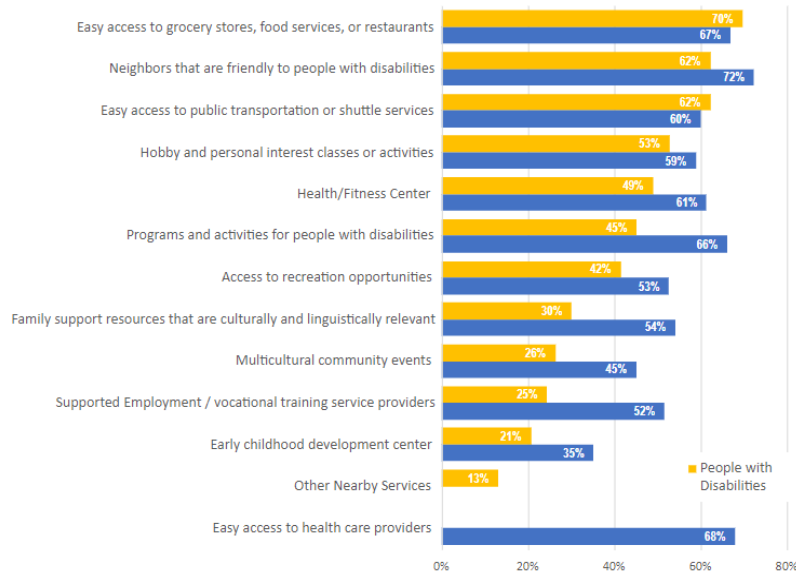


## Housing for the BIPOC Community with Intellectual and Developmental Disabilities (IDD)

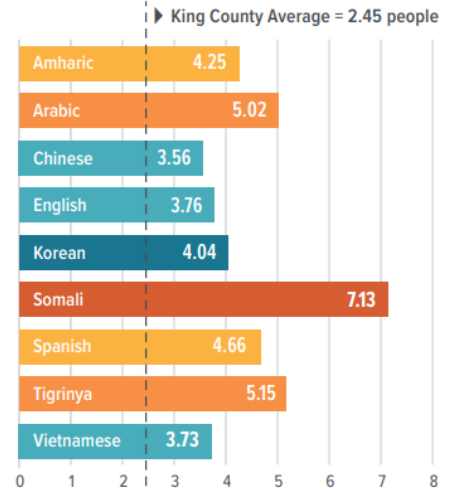
Washington is home to culturally and linguistically diverse people with disabilities and their families. The current housing system does not understand their housing needs and preferences and fails to invest in housing options that meet the needs of the BIPOC (Black, Indigenous and people of color) community. The housing system and housing design reflect the western norm of individualism and prioritizes community voices which reflect western values.

In 2022, ODMF conducted surveys and focus groups with families/care givers, people with disabilities and service providers to understand the primary challenges and needs of diverse communities related to housing. The priorities of people with disabilities and their parents/caregivers are depicted below. The charts represent survey responses to questions asked by Open Doors for Multicultural families to the BIPOC/IDD community and their families. The 354 survey responses gathered represent the needs of 1,276 people including 441 people with IDD from diverse cultural backgrounds. The provider survey represents a population of 8,150. The barriers which disconnect BIPOC communities from housing and services can be reduced by understanding the unique challenges they experience.

### Neighborhood amenity priorities of people with disabilities and parents and caregivers.

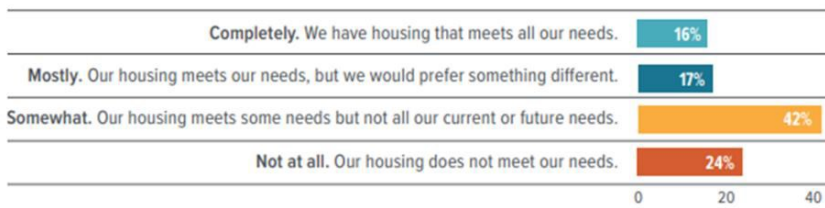


### Households are larger than the King County Average



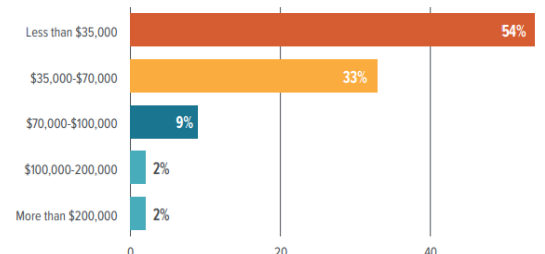
Source: Housing Needs Survey of parents and caregivers of people with disabilities, Open Doors for Multicultural Families, 2021

### Many households need a different housing option



Source: Housing Needs Survey of parents and caregivers of people with disabilities, Open Doors for Multicultural Families, 2021

### The majority households have very low incomes



Source: Housing Needs Survey of parents and caregivers of people with disabilities, Open Doors for Multicultural Families, 2021

Data obtained from Open Doors for Multicultural Families (ODMF) December 2022  
Peter Musante, Public Policy Analyst, [PeterM@MulticulturalFamilies.org](mailto:PeterM@MulticulturalFamilies.org)  
Moses Perez, Program Manager, [Moses@MulticulturalFamilies.org](mailto:Moses@MulticulturalFamilies.org)