

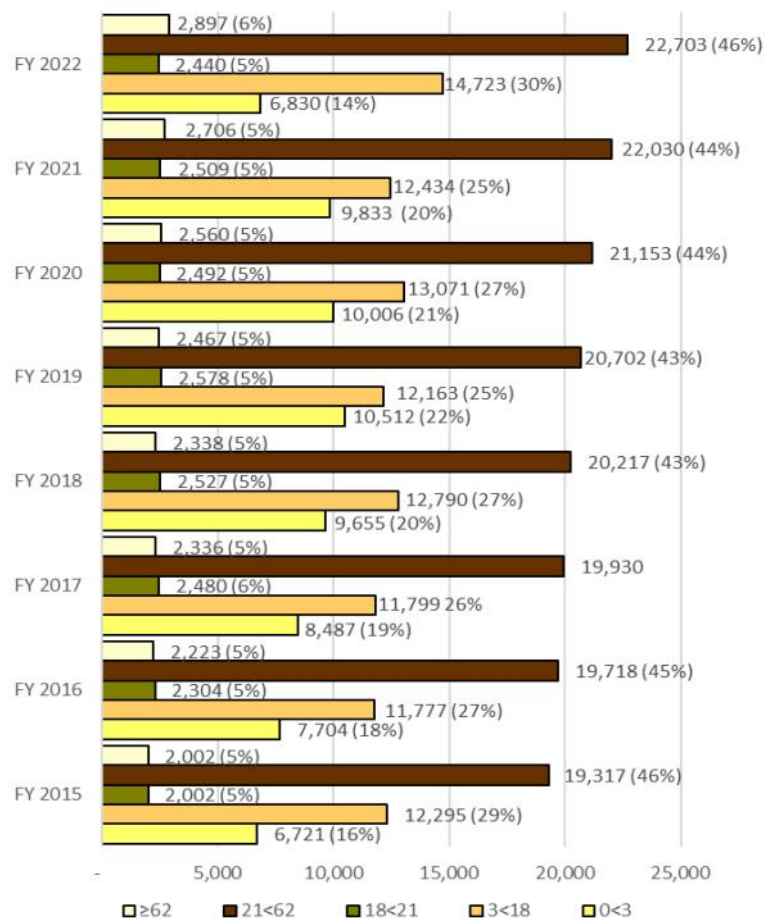
# Developmental Disabilities Administration (DDA) Caseload Growth

Annual Caseload Growth Rate									
	July 2014	July 2015	July 2016	July 2017	July 2018	July 2019	July 2020	July 2021	July 2022
<b>Paid Service Clients</b>	26,587 65%	28,279 67%	30,699 70%	32,472 72%	33,079 70%	34,935 72%	35,233 71%	36,621 74%	37,336 75%
<b>No-Paid Service Clients</b>	14,126 35%	14,058 33%	13,043 30%	12,560 28%	14,448 30%	13,487 28%	14,049 29%	12,891 26%	12,469 25%
<b>Total</b>	40,713	42,337	43,742	45,032	47,527	48,422	49,282	49,512	49,805
<b>Annual growth rate of Paid services</b>		6.36%	8.56%	5.78%	1.87%	5.61%	0.85%	3.94%	1.95%
<b>Annual growth rate of No Paid services</b>		-0.48%	-7.22%	-3.70%	15.03%	-6.65%	4.17%	-8.24%	-3.27%
<b>Annual growth rate of caseload</b>		3.99%	3.32%	2.95%	5.54%	1.88%	1.78%	0.47%	0.59%

Since July 2018: The DDA caseload has grown at an average annual rate of 3%.

- The paid services caseload has increased by 4,107 clients.
- The no-paid services caseload has increased by 2,041

## DDA Caseload Growth by Age Group



Data from Developmental Disabilities Administration (DDA) CARE System July 2022

# Developmental Disabilities Administration (DDA) Enrolled Clients by Ethnicity

	2022 No Paid Services Caseload		2022 Paid Services Caseload		Total Caseload			WA State Population Demographics*	United State Population Demographics***
	Female	Male	Female	Male	Female	Male	Total	As of 2020	As of 2021
American Indian or Alaska Native	1.08%	1.33%	0.78%	1.20%	0.86%	1.33%	2.19%	1.83%	1.30%
Asian	2.19%	3.65%	2.69%	4.60%	2.56%	4.36%	6.92%	9.61%	6.10%
Black or African American	2.28%	3.91%	2.21%	3.78%	2.23%	3.82%	6.05%	4.31%	13.60%
Client chooses not to report/unable to report	2.82%	4.83%	2.40%	3.79%	2.51%	4.05%	6.56%		
Native Hawaiian/ Other Pacific Islander	0.49%	0.75%	4.60%	76.00%	0.47%	0.76%	1.23%	0.81%	0.30%
Other	0.03%	0.04%	0.04%	0.07%	0.04%	0.06%	0.10%		
White	27.38%	42.88%	8.30%	44.03%	28.07%	43.74%	71.81%	78.25%	75.80%
Two or More Races	1.73%	3.45%	1.75%	3.13%	1.75%	3.21%	4.96%	5.19%	2.90%
Unknown	0.34%	4.30%	0.00%	0.01%	0.08%	0.11%	0.19%		
<b>Grand Total</b>	<b>38.34%</b>	<b>65.14%</b>	<b>22.77%</b>	<b>136.61%</b>	<b>38.57%</b>	<b>61.44%</b>	<b>100.01%</b>	<b>100.00%</b>	<b>100.00%</b>
<b>Hispanic or Latino Ethnicity*</b>	<b>6.71%</b>	<b>11.04%</b>	<b>5.36%</b>	<b>8.87%</b>	<b>5.70%</b>	<b>9.41%</b>	<b>15.11%</b>	<b>13.36%</b>	<b>18.90%</b>

\* Hispanic and Latino are not a race, they are an ethnicity. Typically, Hispanic/Latino is an ethnicity within the race of Caucasian.

\*\* <https://ofm.wa.gov/washington-data-research/statewide-data/washington-trends/population-changes/population-race>

\*\*\* [Data Source: United States Census Bureau - July 1, 2021 estimate](#)



# Developmental Disabilities Administration (DDA) 2022 Paid & No Paid Caseloads Changes by County

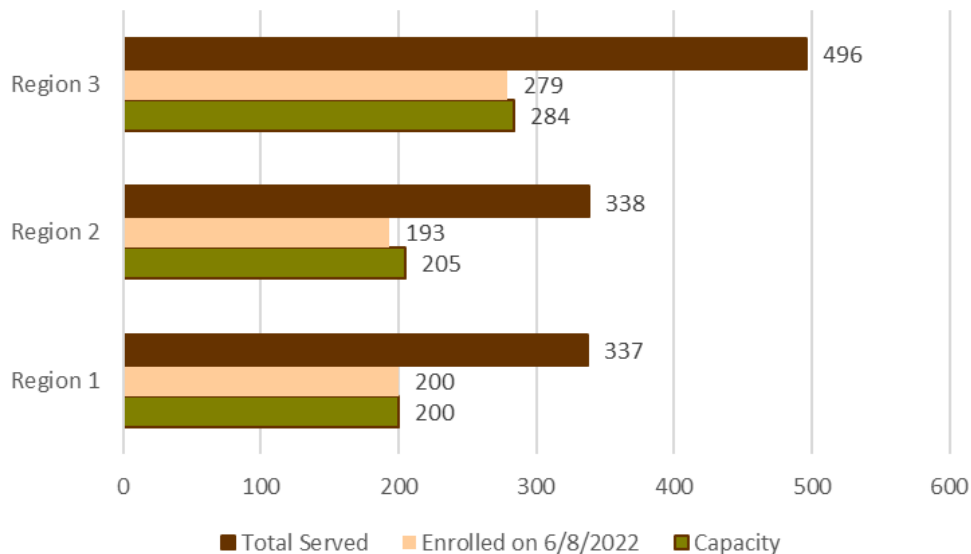
County	Paid	No Paid	Total	% Paid	Change
Adams	54	40	94	57.45%	Decrease
Asotin	99	45	144	68.75%	Decrease
Benton	1,105	470	1,575	70.16%	No Change
Chelan	337	144	481	70.06%	Decrease
Clallam	362	150	512	70.70%	No Change
Clark	2,527	702	3,229	78.26%	Increase
Columbia	17	11	28	60.71%	Decrease
Cowlitz	814	298	1,112	73.20%	Increase
Douglas	157	70	227	69.16%	No Change
Ferry	17	14	31	54.84%	Increase
Franklin	540	239	779	69.32%	No Change
Garfield	5	3	8	62.50%	Increase
Grant	344	189	533	64.54%	Decrease
Grays Harbor	330	106	436	75.69%	Increase
Island	338	180	518	65.25%	Decrease
Jefferson	110	25	135	81.48%	Increase
King	10,551	2,602	13,153	80.22%	Increase
Kitsap	1,205	398	1,603	75.17%	No Change
Kittitas	162	59	221	73.30%	Decrease
Klickitat	71	48	119	59.66%	No Change
Lewis	452	185	637	70.96%	Increase
Lincoln	37	10	47	78.72%	No Change
Mason	220	98	318	69.18%	Decrease
Okanogan	129	62	191	67.54%	No Change
Pacific	65	30	95	68.42%	Decrease
Pend Oreille	40	27	67	59.70%	Decrease
Pierce	4,780	1,528	6,308	75.78%	Increase
San Juan	32	21	53	60.38%	Increase
Skagit	505	191	696	72.56%	Decrease
Skamania	49	11	60	81.67%	Increase
Snohomish	4,019	1,541	5,560	72.28%	Decrease
Spokane	3,245	1,137	4,382	74.05%	No Change
Stevens	196	90	286	68.53%	Decrease
Thurston	1,208	361	1,569	76.99%	Decrease
Unknown	17	6	23	73.91%	Increase
Wahkiakum	277	129	406	68.23%	No Change
Walla Walla	144	47	191	75.39%	Decrease
Whatcom	1,298	317	1,615	80.37%	Increase
Whitman	144	47	191	75.39%	No Change
Yakima	1,379	795	2,174	63.43%	No Change
<b>Grand Total</b>	<b>16,368</b>	<b>5,643</b>	<b>22,011</b>		

## Summary

- The paid services caseload has increased by 4,257 clients between July 1, 2021 and June 30, 2022.
- The no-paid services caseload has decreased by 1,971 clients in that same time period.

# Developmental Disabilities Administration (DDA) Enhanced Case Management Program (ECMP)

## ECMP Caseload Activity Report—October 2022



Clients Exiting ECMP				
EXIT REASONS	Region 1	Region 2	Region 3	Total
Moved to Adult Family Home	14	17	22	53
Moved to Support Living — Group Home	19	11	19	49
Moved to other residential service	0	2	0	2
Deceased	14	16	19	49
No longer DDA Eligible	1	1	4	6
Not Enhanced Case Management Caseload eligible	79	92	136	307
Change in Supervision of Care	8	3	16	27
No Case Resource Manager concerns	2	2	1	5
Moved to No-Paid Services	0	1	0	1
Transferred to Aging and long-Term Support Administration	1	0	1	2
<b>Total Disenrollments</b>	<b>138</b>	<b>145</b>	<b>218</b>	<b>501</b>

ECMP	Region 1	Region 2	Region 3	Statewide
Capacity	200	205	284	689
Enrolled on 6/8/2022	200	193	279	672
<b>Total Served</b>	<b>337</b>	<b>338</b>	<b>496</b>	<b>1171</b>

### Summary

In 2016, the legislature passed SB 6564 to provide enhanced case management services for up to 700 clients who may be at higher risk of abuse or neglect based on various risk factors. The specialized caseloads are 1:40 client/case manager ratio.

This legislation requires DDA to conduct visits with clients on the ECMP at least once every four months, including unannounced visits as needed to:

- Promote a person-centered holistic approach to service;
- Ensure quality of care and health and safety needs are met;
- Assist clients, families, and providers to access available resources; and
- Promote community integration through use of paid and non-paid supports



# Developmental Disabilities Administration (DDA) Client Numbers Approved by Service Type

Type of Program	Region 1		Region 2		Region 3		Totals
	Child	Adult	Child	Adult	Child	Adult	
Basic Plus	77	2135	181	4266	142	3778	10579
Children's Intensive In-home Behavior Supports (CIIBS) Waiver	25	11	46	23	45	17	167
Community Protection Waiver	0	104	0	122	0	165	391
Core Waiver	22	1290	16	1756	7	1461	4552
Individual & Family Services Waiver	914	749	1508	904	1273	819	6167
Community First Choice without waiver	204	1551	433	2525	371	2096	7180
Community First Choice with waiver	834	2738	1318	4546	1096	4144	14676
County Programs—State Only	--	8	--	37	--	21	66
County Programs—Waiver/RCL	--	1749	--	3916	--	2714	8379
Medically Intensive Children's Program	21	--	17	--	23	--	61
Medicaid Personal Care	1	6	5	8	2	18	40
Birth to 3 clients with Child Development Services	953	--	5810	--	2452	--	9215
Children in Specialized Reporting Units	218	--	156	--	107	--	481
Individual and Family Services— State Only	--	27	1	13	--	5	46
State Supplementary Payment—State Only	41	858	80	635	45	788	2447
SSP in lieu of IFS	2	358	8	278	6	333	985
Intensive Habilitation Services	--	--	--	--	--	--	0
Nurse Delegation	65	923	44	1546	50	1231	3859
Private Duty Nursing	--	--	--	--	--	--	0
Own Home (Alternative Living)	1	74	--	5	--	1	81
Own Home (Companion Home)	--	21	--	19	--	33	73
Own Home (Supported Living)	--	1065	--	1507	--	1304	3876
Roads to Community Living (RCL)	3	53	6	106	6	94	268
Out-of-home Services	30	23	9	9	10	5	86
Residential Habilitation Center (RHC) - long term stay	--	192	--	167	--	102	461
State Operated Living Alternative	--	59	--	66	--	77	202

# Developmental Disabilities Administration (DDA) Children and Adults Enrolled as Clients (By County)

County	Children	Adults	Total
Adams	21	73	94
Asotin	49	95	144
Benton	689	886	1,575
Chelan	202	279	481
Clallam	131	381	512
Clark	1,508	1,721	3,229
Columbia	4	24	28
Cowlitz	611	501	1,112
Douglas	115	112	227
Ferry	3	28	31
Franklin	435	344	779
Garfield	1	7	8
Grant	131	402	533
Grays Harbor	79	357	436
Island	271	247	518
Jefferson	36	99	135
King	6,344	6,809	13,153
Kitsap	642	961	1,603
Kittitas	41	180	221
Klickitat	52	67	119
Lewis	294	343	637
Lincoln	6	41	47
Mason	81	237	318
Okanogan	39	152	191
Pacific	21	74	95
Pend Oreille	14	53	67
Pierce	2,696	3,612	6,308
San Juan	30	23	53
Skagit	215	481	696
Skamania	27	33	60
Snohomish	2,858	2,702	5,560
Spokane	1,353	3,029	4,382
Stevens	48	238	286
Thurston	354	1,215	1,569
Wahkiakum	6	17	23
Walla Walla	119	287	406
Whatcom	774	841	1,615
Whitman	81	110	191
Yakima	870	1,304	2,174
<b>Grand Total</b>	<b>21,251</b>	<b>28,365</b>	<b>49,616</b>

## Summary

- The average annual growth rate of the DDA caseload is 2.05%.
- The average annual growth rate by age group is:

0<3	-29.26%
3<18	15.11%
18<21	-3.44%
21<62	12.30%
≥62	23.91%
- Children are age 0<18

