

Topic: What is Needed to Ensure Every Student Has an Inclusive Education?

Summary:

Schools need to work for ALL children. Research shows that when children with disabilities are meaningfully educated alongside their peers and have access to the general education curriculum, they have better outcomes. Inclusive settings set the stage for living a flourishing and meaningful life.

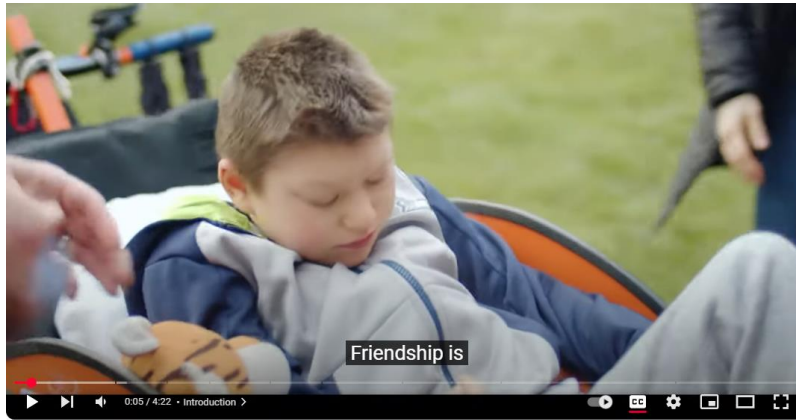
What is Needed:

We need to be sure that every child has access to the general education curriculum. This includes [access to robust inclusive early supports for infants and toddlers](#). We need to design, build, and invest in [evidence-based supports](#), so children of all abilities can reach their full potential. We need to change practices in schools that harm children and figure out how to pull in services from a variety of sources so children flourish and families aren't left trying to figure it out on their own.

What to Watch for this Session:

- [Remove the Cap on Special Education Funding](#)
- [Design, Resource, and Track Inclusive Learning](#)
- [Funding Fix for Early Supports for Infants and Toddlers](#)
- **HB 1257:** [Extending special education services to students with disabilities until the end of the school year in which the student turns 22.](#)
- **HB 1795/ SB 5654:** [Addressing restraint or isolation of students in public schools and educational programs.](#)
- **SB 5263** [Concerning special education funding.](#)
- **HB 1310** [Concerning special education funding.](#)

Watch: Inclusionary Practices Project



Inclusionary Practices | OSPI